

Issue 29

insider

February 2016



manufacturing world-class interiors



For this issue of the Insider we look back at 2015 and look forward to the year ahead

Cover story:



Grand Central, Birmingham

In this issue:

- 3. SAS Group News
- 7. Recent Irish Projects
- 8. Project Wins
- 10. On site with SAS
- 14. Features: Review of 2015
- 16. Linear profile ceiling systems explained
- 18. Case Studies:
Birmingham New Street Station
Martin Place, Sydney
- 22. UK Project Photos
- 24. Digital Corner
- 25. Apprentices at SAS
- 26. Team SAS
Charity
Long Service Awards
New Faces
Meet the Team

Happy New Year to everyone at SAS International, our loyal customers and our supportive suppliers.

2015 saw the launch of the new SAS website, an extensive project which involved employees from different areas of the business. Overall feedback has been positive and we strive to keep the website updated and make improvements where necessary. More achievements, including a huge £10,000 raised for charity (!) can be seen on pages 14-15 in the review of 2015 infographic.

The last four months have demonstrated the widespread success of SAS, with projects winning awards in the UK at the BCO National Awards, and in Australia at the NSW Architecture Awards. We have also been recognised for our health and safety efforts with our project teams on site. Read more on pages 4-5.

To celebrate the start of installation on site at West Kowloon Terminus, SAS International took part in a Bai San ceremony to encourage good luck and fortune for the project. A photo can be seen on page 6.

Recent project wins in London include Crossrail Liverpool Street Station and 11-19 Monument Street. Over 4,000 miles away in Abu Dhabi, the Dubai team have won another iconic project, Abu Dhabi Islamic Bank. The Insider spoke to Mike Collins to find out more – see page 9.

Another 7,500 miles away and we're currently on site at The Sydney International Convention, Exhibition & Entertainment Precinct (SICEEP) in Darling Harbour. Could we forget the largest commercial project in the southern hemisphere? A 20 minute walk from SICEEP and you're at Barangaroo, which already has 150,000m² of SAS metal ceilings installed with a potential for more (see page 10).

With recent product developments of linear profile metal ceilings, a feature article on pages 16-17 explains the differences and similarities between systems 700, 710, 720, 730, 740 and 750.

Case studies on pages 18-21 feature Birmingham New Street Station and Grand Central, including the largest John Lewis outside London, and 50 Martin Place in Sydney.

Have you met our apprentices? Based in Reading, Maybole and Apollo Park – see what they are currently up to on page 25.

The time has come to say goodbye to SAS International and hand over the role of Insider editor to the marketing team. Thank you to everyone who has contributed to the nine issues I have had the pleasure of working on.

The next Insider magazine will be the 30th edition which coincides with the Insider's 10th anniversary – Issue 1 was published in November 2006!


Rosa Lenders, Editor

The Insider brings you news from every part of the SAS Group. We would like to have your feedback and contributions, including your views about the changes we have made to the Insider. Our email address is sasinsider@sasintgroup.com

Introducing SAS Special Projects

As of January 2016, *SAS Project Management* ('PM') has been renamed *SAS Special Projects*. Why did SAS believe a name change was necessary for a long established identity within the group?

In 2015, careful consideration was given to the purpose of SAS' construction and installation division, and how the service offering is perceived by clients and customers. The SAS International brand associations predominate – SAS Special Projects' customers often referring to them as 'SAS International' or 'SAS' – but from an identity point of view, SAS Special Projects' offering is significantly different. It is important to clearly define its core function within the group and communicate this both internally and externally. SAS strongly believed that a change in name would aid communication and promotion of the full service offering.

SAS Special Projects has been involved with many high profile projects historically. What categorises these is the challenging level of complexity, scale, risk and/or ambitious design intent requiring significant knowledge and expertise. These projects often require new solutions to challenging design problems and SAS Special Projects is ideally and uniquely placed to deliver them.

Bloomberg is a great example of this and SAS is currently working on numerous other projects to deliver bespoke solutions. These projects require a product development process that considers all aspects of design, manufacture and installation. SAS Special Projects is best placed to provide this complete service package.

The Greenwich Gateway Pavilion won Project of the Year and Gold in the Judges' Awards categories last year at the FIS Contractors Awards. This proves SAS Special Projects is uniquely positioned to take on challenging projects showcasing the SAS brand. Through such projects, SAS Special Projects enhances the reputation and brand recognition of the group as a whole.

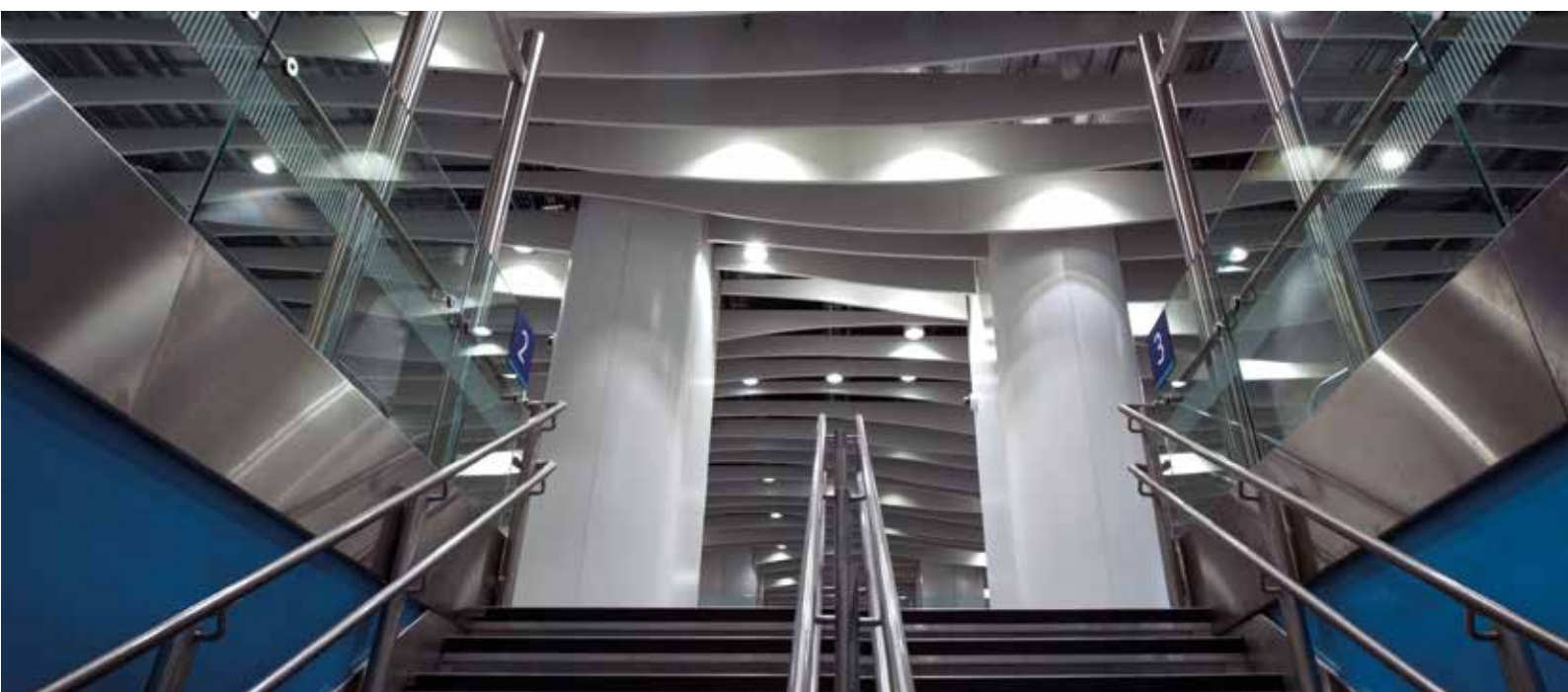


By operating in the specialist sector, SAS Special Projects is at the coal face of the construction industry. This exposure allows them to monitor emerging market demands and analyse trends, capitalising on new opportunities as they present themselves.

The new name helps to define the nature of projects SAS Special Projects engages with and contracts. It establishes a specialist niche whilst not competing with core SAS International opportunities. Projects may be categorised as 'special' due to scale, approach, complexity, product demands or challenging environment. As an example, large infrastructure projects (see Liverpool Street Station – page 8, Birmingham New Street – pages 18-19) require

a particular disciplined approach. SAS Special Projects is continuing to build on its reputation for delivering world class projects in such highly challenging environments.

Led by Construction Director Rik Lenney, the SAS Special Projects team is busy securing work into 2017 and beyond. With a growing reputation powered by the SAS brand, there is more than light at the end of the tunnel.



Providing a winning formula - SAS International specified for BCO National Awards winners



SAS International provided products for 12 of the regional winners of the British Council for Offices (BCO) Awards (issue 28). The National BCO Awards

took place at the Grosvenor House Hotel in London, on Tuesday 6th October. Five projects went on to become national winners, featuring over 11,000m² of

SAS International products.

Three of the national winners are located in northern England and Scotland, bearing testament to the increased investment into regions, resulting in award-winning developments.

Projects up to 2000m²:

The Albus, 110 Brook Street, Glasgow - 4,300m² of SAS System 120 and SAS System 130 ceiling solutions.

Fit out for Workplace Award:

PwC Edinburgh, Atria One, 144 Morrison Street, Manchester - SAS System 130 ceiling tiles.

Commercial Workplace:

One St Peter's Square, Manchester - 1,900m² of SAS System 130, 4,400m² of System 330 and System 150, 500m² of System 320 ceiling solutions, and 81 linear metres of System 8000 partitioning.

Best of the Best Award & Corporate Workplace Award:

Keynsham Civic Centre & One Stop Shop Market Walk, Keynsham - 281 linear meters of System 8000 partitioning.

Refurbishment/Recycle Award:

1 & 2 Stephen Street, London - architectural metalwork discs, System 330 and System 130 ceilings for the shell & core.

SAS International is supporting the recognition of Best Practice by being a gold sponsor of the National Award for the 'Fit out of Workplace' category.



if preferred. The cards are reviewed weekly by the TWBN Health & Safety team, who will action any necessary improvements. Furthermore, every three months, a card is picked for the H&S Award and a cheque for £500 is donated to a charity of the winner's choice.

Having been selected for the H&S Award, SAS International decided to donate the money to The Church of Grace International (COGI), a charity looking after the most vulnerable people in Ghana, the Ivory Coast and the UK.

James Boadu, a colleague of the site team at Tottenham Court Road, brought COGI to their attention. As a member of the charity, he knows how important it is to support a small charity like COGI to enable them to carry on building schools and orphanages, ship food and toys, and arrange community support programmes for those in need. James sends on his thanks to everyone at SAS International.

Carrying on the good work, SAS also won the John Vahey Cup for implementing safe working practice and procedures in a separate scheme by principal contractor TWBN. The SAS team was commended for producing an exceptional accident report with proactive remedial actions following a recent safety audit. The Award is issued every six months to promote and incentivise safe working practices and good communication of safety issues on site. "We often get praise for the products we design, supply and install on our projects but we also put a lot of effort into the way we carry out our works and it's nice to get recognition for that too." - Dan Collins, Project Manager, SAS International.

SAS International recognised for onsite Health & Safety

As a manufacturer, SAS International has received recognition for the design, supply and installation of products, but little is known about SAS International's efforts to ensure the health and safety of its project teams.

At Tottenham Court Road (issues 25 and 27), one of the biggest transport investments (£1bn) currently being carried out in the UK, SAS International received positive feedback in the project's Health & Safety (H&S) evaluation scheme.

Observation Cards were introduced by main contractor Taylor Woodrow BAM Nutall (TWBN) as a quick and easy way for site operatives to raise any concerns about H&S or suggestions for improvements on site, including office and welfare areas. Highlighting positive interventions is encouraged to improve site conditions and reward good suggestions and behaviours.

Small letter boxes are placed around the work area for the cards to be submitted, anonymously

No cards for Christmas raises £1,372 for ReadiBus



SAS International did not send paper Christmas cards to its customers last year, spreading festive cheer and delivering season's greetings the electronic way instead. The money saved went to the ReadiBus charity.

Founded in the 1980s, ReadiBus is a dial-a-ride bus service for people with restricted mobility in and around Reading.

The bus service is for people of all ages who cannot make use of mainstream bus services offered in the area. Even though a lot has been done over the years to make public transport more accessible to people with disabilities, there are always people who are not able to cope with the conventional services.

SAS' donation will provide two sets of bus equipment to secure wheelchairs, enabling people who are unable to use mainstream public buses the opportunity to retain independence and freedom.

NSW Architecture Awards 2015 - SAS International projects are winning over Australia

In July, three SAS International projects won an accolade at the New South Wales (NSW) Architecture Awards 2015 at Sydney Town Hall. The event was organised by the Australian Institute of Architects, providing a platform for the architectural community to demonstrate to their peers what projects they have been working on.

From a shortlist of 79 projects, 53 awards and commendations were given out on the night, including three projects featuring SAS International metal ceilings:

- **Sir Arthur G Stephenson Award for Commercial Architecture & the Colorbond Award for Steel Architecture:** 50 Martin Place - gold anodised System 750 Tubeline, System 130 and System 330. Designed by Johnson Pilton Walker Architects, the project was praised for its sustainable design. Read more about this project on page 20.
- **William E Kemp Award for Educational Architecture:** The University of Technology Sydney (UTS) Science Faculty - System 150 and System 205, designed by Durbach Block Jaggars Architect and BVN. The building is an innovative hub for applied research and practice-oriented education in health and science. It is the second university building in New South Wales to be awarded a 6 Star Green Star rating. It has recently won the Green Globe Award in the 'Building environment sustainability – commercial properties' category.



- **Architecture Award:** The University of Sydney's Charles Perkins Centre designed by FJMT and Building Studio, featuring System 310.

The Sydney award winners went on to compete at the National Architecture Awards on 5th November 2015 in Brisbane. Two of SAS International's projects emerged victorious again on the night:

National Award for Educational Architecture – UTS Science Faculty, Building 7 by Durbach Block Jaggars Architects & BVN (NSW)

Harry Seidler Award for Commercial Architecture & COLORBOND® Award for Steel Architecture – 50 Martin Place by JPW (NSW)

Congratulations from SAS International to all winners.

Fit (out) for a Queen - Her Majesty and the Duke of Edinburgh visit Birmingham New Street Station

On 19th November, Her Majesty Queen Elizabeth II and HRH Prince Philip, Duke of Edinburgh officially opened and toured Birmingham New Street Station. Arriving by Royal Train, the pair had a long itinerary in the city, including a meeting with members of

staff and apprentices who were involved in the construction project. In a short ceremony, the Queen also unveiled a plaque to herald the completion of the multi-million pound restoration.

SAS International hopes that the Queen approved of its waveform baffles during her tour of the station's concourse.

Faith restored - St Mel's Cathedral wins SAS sponsored category at the Fit Out Awards in Dublin



SAS International sponsored the Project of the Year category at the Fit Out Awards in Dublin (issue 28) in a bid to recognise industry excellence. The ceremony took place on the 5th November at the DoubleTree Hotel.

Cathal McGuinness, Director at SAS International, presented the Fit Out Project of the Year Award to Colm Redmond, Fitzgerald Kavanagh + Partners for St Mel's Cathedral in Longford. The protected structure was built in the neoclassical style between 1840-1893, and was severely damaged by a fire on 25th December 2009. The interior of the building, together with the roof and timber floors, was completely destroyed.

Re-opened in December 2014, the Cathedral was restored to its former glory using traditional building materials and techniques to reinstate the historic fabric, whilst at the same time incorporating modern building service systems to enhance the use of the building for the client.



Not relying on a fortune cookie - SAS performs Bai San ceremony at West Kowloon

SAS International commenced installation of the West Kowloon ceiling panels in December 2015. To mark this occasion, a Bai San ceremony was held on site.

Bai San is a popular ritual which is typically performed to honour one's ancestors by praying with incense and burning money. In Hong Kong, Bai San ceremonies are

traditionally held at the start of construction projects to receive good luck and fortune.

As the ceremony is accompanied by a meal, SAS International provided the roast pigs, which were ceremoniously cut, six ducks, six chickens and plenty of fruit. The event was well attended by senior Leighton-

Gammon Joint Venture (LGJV) and Mass Transit Railway (MTR) employees, who enjoyed the festivities.

The ceremony itself was performed by Principle Project Director Adrian Clamp (LGJV), Construction Director John Campbell, Architectural Builders Works and Finishes (ABWF) Senior Construction Manager Francis Liu, and ABWF Construction Manager Ivan Summersby.

Thank you to the LGJV site team and GCladd, SAS International's installation company on-site, for organising the event. SAS International can now be confident of good fortune in the delivery of the front of house ceiling finishes.





Alexion Pharmaceuticals

American pharmaceutical company Alexion Pharmaceuticals opened their new LEED certified office in Dublin last year. Main contractor Steward specified SAS International for the fit-out of the office areas. In total, 4000m² of System 500 in RAL 9010 were supplied.



Google

Google is well known for its unusual office fit-outs, so it is not surprising that the internet giant had special requirements for the ceilings in its new Dublin office. Main-contractor Structuretone suggested SAS International for the manufacturer's ability to deliver bespoke printed ceilings. Working in a coordinated effort with architects Reddy Architecture, SAS International printed images on 200m² of System 150 tiles which were custom-made to make up said image.



Kerry HQ

Client Kerry Group Global Technology & Innovation Centre initially intended to specify mineral fibre tiles for its new headquarters in Ireland, following the specification of the company's US base. However, a SAS International presentation on the benefits of metal ceilings convinced Kerry otherwise. In the end, 20,000m² of System 130 (offices and meeting rooms), 200m² of System 150 (kitchen), and 500m² of System 205 (corridors) were installed.



Ryanair

Architects Henry J Lyons worked alongside main contractor JohnPaul Construction on the fit-out and refurbishment of Ryanair's Head Office at Dublin airport. Offering a combined package (including dry lining), and the ability to deliver to tight schedule, SAS International was selected for the fit-out of the main office areas. To meet the specification criteria of achieving 49dB, System 8000 DG was installed.



Yahoo

Collins Architects specified SAS International's System 8000 DG for its 49dB acoustic performance, integration with drywall systems, and flush glazed (smoked grey) door performance. Supplied for the offices, meeting rooms and phone booths, subcontractor Castle Ceiling was able to combine the glazing with the drywall and ceiling. This way, all the major finishes were coordinated to fit the architect's design vision.

Crossrail Liverpool Street Station - Modern travel on historical grounds



For a lot of people, the daily commute to London consists of delays, overcrowding and general frustration. The major redevelopment Liverpool Street Station is currently undergoing is set to change the dreaded experience for nearly 150 million visitors annually. The end result will be an increase in capacity, improved accessibility and upgraded interchanges as part of the construction of Crossrail, the new high

frequency, high capacity railway for London and the South East.

Crossrail's Liverpool Street Station will serve the City of London and afford interchanges with London Underground services, connections to Stansted Airport and National Rail services at Liverpool Street and the nearby Moorgate Station.

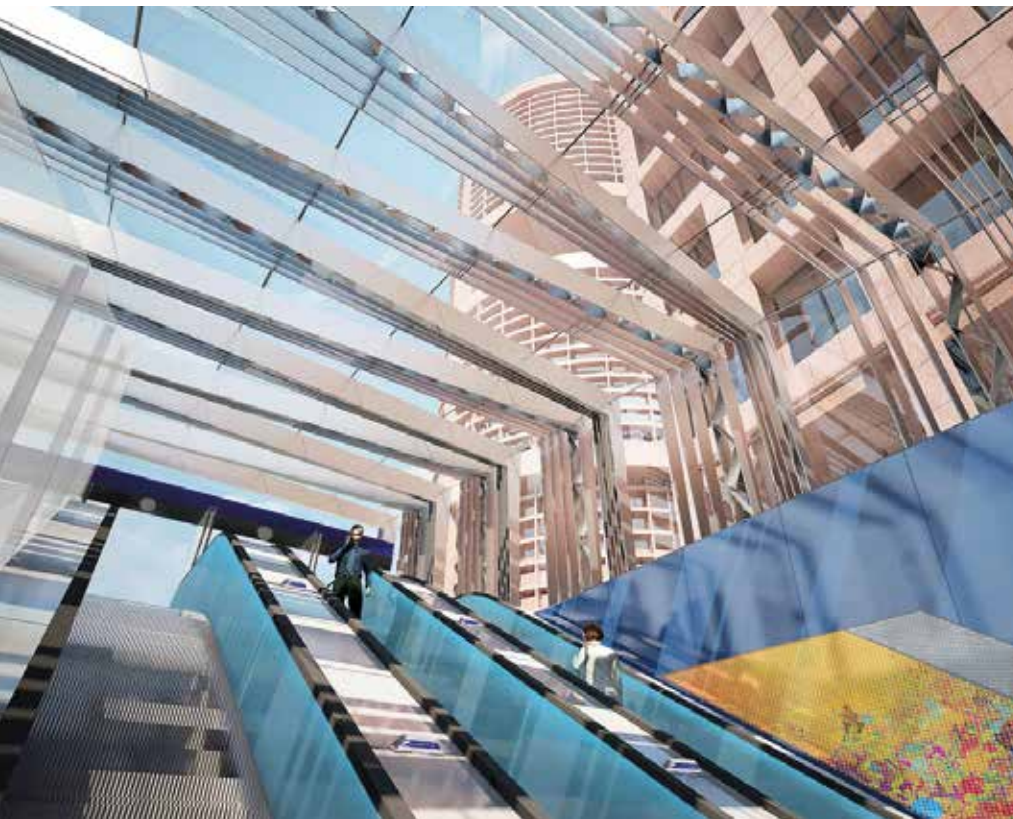
Crossrail trains on the East Anglian route will commence shortly after construction has finished at Liverpool Street (by the end of 2017). By then, both Moorgate and Liverpool Street stations will provide new entrances and ticket halls to relieve congestion.

As the high footfall of the station requires acoustic management, SAS Special Projects was selected as the sub-contractor to install bespoke acoustic internal shaft linings. Furthermore, System 150 with a D2352 perforation will be installed in the back of house, System 200 with a 2841 perforation in the corridors, and System 800 Trucell where Crossrail meets London Underground (LUL). System 205 in a brushed steel finish and System 730 H-shaped profile has been specified for the ticket halls, leading to a total of 1,800m² of SAS products.

All SAS International systems are LUL Section 12 approved; this regulation covers all materials used for the fit out/decoration of underground stations, brought in after the fire at King's Cross in 1987. For added security, every ceiling is bomb blast compliant.

Architectural practice Hawkins Brown has been working with Arup and main contractor Laing O'Rourke on the design and construction of the project. The new station combined with Crossrail will not only help to ease overcrowding, but also bring economic growth to the area. New office and retail units on Moorgate and Liverpool Street will create additional working, shopping and eating venues in the area, while the re-modelled public spaces around the area will provide open spaces for people to work and relax in.

During excavation at the start of the redevelopment, over 1,000 individual artefacts were discovered. There are 2,000 years of history buried beneath the site of Crossrail's Liverpool Street station, including the foundations of Broad Street railway station; the former Bedlam burial ground; Moorfields marsh; a Roman road and the Walbrook, one of London's lost rivers.



Banking on SAS International for the fit-out of ADIB

SAS International Dubai has won yet another iconic project in the United Arab Emirates capital city of Abu Dhabi.

This time it's a twin tower project for ADIB - Abu Dhabi Islamic Bank - designed as a landmark headquarters building, occupying a prominent corner site on Airport Road Abu Dhabi. The towers complement each other: one provides high end HQ accommodation for ADIB (the bank itself), whilst the other tower provides Grade A speculative office space. The project calls for a combined total of 24,000m² of SAS' 330 metal ceiling system.

In defining their fit-out specification for the two towers, architects Woods Bagot and the internal design committee for the Abu Dhabi Islamic Bank were encouraged to carefully evaluate other major office projects within Abu Dhabi.

Following a number of visits to active projects it was quickly established that SAS metal ceiling systems are already the preferred solution for major clients and developers within the capital city Abu Dhabi. In order to maintain their market position and to attract affluent tenants, the ADIB team specified SAS' 330 ceiling system. Complete with its unique Ultramicro perforation pattern and high end acoustic inserts, this system combines unusual aesthetics with an elevated level of performance to satisfy the requirements of ADIB for Tower 1. The carefully selected design is also



used to attract tenants for the speculative office space in Tower 2.

The fit-out contract was eventually awarded to Al Tyer Stocks, a good quality fit-out contractor with an existing relationship with SAS. Rory Binder – Project Director for ATS – travelled with Mike Collins from SAS' Dubai office to meet up with Jon Wood and the Export team. Integration details for light fittings and air supply grilles were discussed whilst also establishing that SAS

could meet the demanding production and shipping programme required to keep pace with the blistering installation programme being planned by the Al Tyer operations team. So far 9 sea freight containers of SAS ceilings have already arrived at site – with a further 7 to go. SAS will follow up in the next Insider to illustrate progress and demonstrate the quality of its installed product.

When history meets the future of functional design

When work on site of 11-19 Monument Street commenced in December 2013, Make architect Ken Shuttleworth and his team set out to establish a building that would celebrate its contextual setting next to Wren and Hooke's Monument to the Great Fire of London.

The building's eye-catching full height glazed façade, with a striking 'curtain' of vertical undulating metal rods, forms a calm sculptural backdrop to the Monument. The new build is replacing the existing buildings at 46 Fish Street Hill and 1-2 Pudding Hill with an 8,360m² Grade A office-led scheme, including 278m² ground-floor retail space.

Apart from offering the City of London a new and outstanding structure, the redevelopment is also setting new occupational standards while providing a contemporary and energy efficient building.

Standing nine floors tall, 11-19 Monument Street has been designed to achieve BREEAM Excellent rating, as well as an Energy Performance Certificate A (EPC A). Make architects worked alongside main contractor, developer and tenant Skanska Construction, to ensure the sustainability of the redevelopment. This included



a green roof with photovoltaic panels, LED lighting, sun absorption management and the sustainability of materials specified.

Contributing towards the building's green ratings are 7,080m² of SAS International's metal ceiling System 330 and blind boxes in the office areas. Furthermore, SAS International ensured that the sound absorption was on par with the importance of the actual office design by

installing a perforated ceiling system with acoustic pads.

11-19 Monument Street is the second commercial office development in the UK under the "Workplaces by Skanska" banner. Skanska Construction also developed 66 Queen Square in Bristol which has specified SAS International ceilings throughout.

The Monument building is expected to open in May 2016.



Breathing new life into Sydney's Convention Centre

The Sydney International Convention, Exhibition & Entertainment Precinct (SICEEP), situated in the heart of Darling Harbour, was developed in 1980. Although at that time it was considered a state of the art project, 36 years later a more flexible conference

space was required to meet the needs of delegates and visitors alike. It was high time for an upgrade, as the centre missed out on an estimated \$150 million (AUD) over the last five years because it could not accommodate 170 conventions and 13 exhibitions.

Work on the project designed by architects Hassell + Populous (H+P) started in spring last year, and involves the redevelopment of the Sydney Convention and Exhibition Centre, the Sydney Entertainment Centre (SEC), and the SEC Car Park.

H+P's aspiration was to attain a monolithic look to the space, therefore, main contractor LendLease specified SAS International's concealed grid System 150 to realise the design. Perforated ceilings in the large meeting areas at the Convention Centre were installed to combat high sound reverberation and absorption issues associated with the size of the space, achieving 0.9NRC. The ceilings were arranged in 2.4 x 2.4m bays with 300mm zones between each bay, allowing heavyweight service tracks and operable walls to be moved into different locations with ease. System 150 extruded bulkheads close off each of the bays for an aesthetically pleasing finish.

Services, such as speakers and lighting, are mounted within the 300mm zones between the bays, which needed to be a particular size. A mock-up was installed, and SAS worked closely with the architect and service engineers to design a special width closure bulkhead of 22.5mm to accommodate and integrate all of the services within that zone.

In total, 3000m² of SAS International materials were installed in all three SICEEP buildings.

The project is expected to be completed in the second half of 2016.

No easy feat - Barangaroo Towers require extraordinary project management skills

Barangaroo is currently the biggest commercial project in the southern hemisphere. The extraordinary scale of the development, which is changing the shape of Sydney, includes three new commercial office towers as well as low-rise residential apartment buildings, an international hotel, shops, cafés, restaurants and Headland Park. When completed in 2020, around 23,000 people will live and/or work in the precinct, and 12 million will visit every year.

A project of this dimension requires meticulous planning. Therefore, client and main contractor LendLease specified SAS International because of its ability to manufacture and schedule for a project as large as Barangaroo. Fitting out an impressive 25,000m², SAS International built a huge mock-up the size of one quarter of the floor prior to product installation in order to avoid any integration issues. Working alongside sub-contractors Cubic Interiors and Austem Interiors, SAS International utilised the online project management software Smartsheet to schedule the project accurately.

Architect Rogers Stirk Harbour + Partners selected System 330 and System 200 for all office floors, not only for their ability to accommodate services, lighting and chilled beams, but also for their aesthetic qualities.



Having started work on the base build installation in January 2014, a total of 150,000m² of SAS material has been installed to date. Estimated completion is June 2016, however, SAS International is engaging in several fit-outs within the three towers, and has already secured projects with PwC, KPMG, LendLease and Swiss RE.

Set to achieve a 6 Star Green Star rating, Barangaroo is a great opportunity to showcase Sydney as a world leader in sustainability, setting a trend for future developments everywhere.

The growing city - Central Square Leeds

Situated in Leeds' West End, just 100m from Central Station, the new addition to the city's skyline comprises two commercial properties. The first is a 6,000m² building for hotel or office use, arranged over eight storeys. The second is a 12,000m², eleven storey building for office use. The two blocks are linked by a large sloped curtain wall creating a spacious winter garden and atrium. A 910m² Sky Garden is located at ninth level, which will be available for use by the tenants of the building, providing impressive views of the city.

SAS International worked alongside main contractor Wates Construction, who specified System 330 for its scope and ability to integrate lighting. In total, 16,500m² of SAS materials were installed (600mm x 600mm tiles with 100mm C-Profiles) within the offices, lobbies and toilets. Tile apertures and grilles were pre-formed during manufacturing to enable seamless and simple service integration into the suspended ceiling.

The focus of the scheme, designed by Leeds practice DLA, was top quality, vibrant and flexible Grade A office space with a clear commitment to environmental sustainability. The building will have a BREEAM 'Excellent' rating (working towards 'Outstanding').

Roger Thompson, Development Management Partner at EC Harris, a company responsible for project management, said: "The development plans for the site are the outcome of several months' hard work and collaboration with an excellent team. The result is a design of a scale and quality that is commensurate with the importance of the site and the City."

The multi-use building features 1,860m² of restaurant and bar area, as well as retail space on the ground floor. The scheme is expected to generate around 1,600 jobs when it opens its doors mid/late 2016.



SAS International means business - makeover for Manchester's business district

Situated next to Spinningfields, a vibrant riverside area with a skyline, One New Bailey, a new office development in Salford, is being built as part of Manchester's business district regeneration. Erected on the old grounds of the Eighties mixed offices scheme Ralli Courts, the revamp added new life into the area, and provided the aesthetic overhaul that was needed.

Working to high quality specifications, architects AEDAS and fit out architect TP Bennett were looking for a ceiling manufacturer able to meet their requirements. SAS International did not only fit the bill, but had a proven track record having done previous work at St. Paul's Square, Liverpool, for the client English Cities Fund.

A total of 6,000m² of SAS material was supplied for the corridors (System 150) and offices (System 330), which are already fully let to international law firm Freshfields Bruckhaus Deringer. Ceilings with service



integrations, such as lighting and grilles, were supplied with factory formed apertures, and a narrow C-Profile was provided to create a larger 1400 x 1400 tile.

The Grade A office space received a BREEAM Excellent rating and is expected to open in May 2016.

The refurbishment of London Bridge Station - UK's capital city in line for a new landmark

Network Rail project director Laurence Whitbourn called it a privilege to work on something of this scale and complexity, which will be a new iconic landmark for London. He was talking about the refurbishment of London Bridge Station, a two phase project due to be completed in September 2017.

Used by around 56 million passengers a year, the station is in need of more space to enhance the travelling experience and improve arrivals and departures. Once finished, the overhaul will result in improved facilities, a reconfigured track to reduce train delays, more trains to more destinations, and a better accessible building.

The London Bridge Station design team HyderWSP JV and architect Grimshaw are working together with the main contractor Costain to radically modernise the existing building.

Due on site at the beginning of 2016, SAS Special



Projects will supply and install 2,780m² of bespoke aluminium cladding, and 650m² of bespoke stainless steel cladding to the escalators and stairs, both on the vertical sides and the soffits. These products were specifically specified to satisfy bomb blast requirements and impact resistance.

The station remains functional during reconstruction, transforming the area into a combination of building site and partially opened platforms. By keeping the station open during renovations, disruptions will be reduced to a minimum.

The Fitzrovia makeover

Offering 140,000sq ft of office space and a 4,000 sq ft reception area, 1 Fitzroy Place is one of central London's prime developments, allowing tenants and visitors to have a brush with local cultural history. Former residents of the Fitzrovia area include famous names like Charles Dickens, Virginia Woolf and John Constable. The charm of the unique district, as well as the spectacular atrium and scenic lifts have attracted Estée Lauder Companies, who are the sole occupiers of 1 Fitzroy Place.

Sub-contractor Sir Robert McAlpine contacted SAS International directly to find a solution for the very complex sloping car park ramp ceiling. The design required the ceiling to be suspended below a soffit that was already populated by a number of services running along either side of the ramp. To achieve this, and allow accessibility, a plain System 330 Hybrid was installed, consisting of a channel (not a C profile) fixed to the soffit, with the tiles attached to the channel.

Covering a total of 200m², the System 330 Hybrid was also installed at the entrance of the building. The project is expected to finish in September this year, adding a stunning development to the vibrant and enticing Fitzroy Place.



Edinburgh's business district receives upgrade A

According to a Telegraph article back in May 2015, Edinburgh is the best city in the UK for job growth. With a jobs on offer rate almost twice as high as the national average, the city is in need of suitable facilities to accommodate this progression. While office space is at a record peak, the availability of quality open plan space in the city is few and far in between. The looming shortage of Grade A offices in the city centre poses a real challenge for Scotland's capital.

To counteract the scarcity of properties fit for commercial purpose, German property firm IVG Institutional Funds has procured the refurbishment of 40 Torphichen Street, formerly home to investment bank Blackrock.

Michael Laird Architects are working with main contractor Robertson Group on the timely delivery



of 5,050m² of Grade A open plan office space over six floors. In order to meet the high fit-out standards, 4,000m² of SAS System 130 with a central 1200mm x 600mm plank is being installed throughout.

The quality of the redevelopment will significantly improve the building both externally and internally allowing it to capitalise upon both an improving market and a dramatically improving location.

Sovereign Square Leeds is set for the hustle and bustle of a successful regeneration project



The site of the old Queens Hall, a former concert and exhibition venue in Leeds, has been deteriorating for over 25 years. Having been used as a council-owned car park since 1989, a sufficient purpose has never been found to make full use of the location's potential. That was until KPMG, a professional service company, kicked off the regeneration process by entering into a lease agreement for lease to occupy a new 5,670m² purpose built office on Sovereign Square.

As the first large new build office in Leeds city centre since 2006, and the first of three buildings erected around a novel area of green public realm, the importance of the site's position cannot be underestimated. In close proximity to the city's railway station, retail core and vibrant waterfront area, Sovereign Square has been called a "key site in the city", which comes with the anticipation of prestige to follow.

Designed by international design practice Scott Brownrigg, the building has been developed exclusively for KPMG, who acknowledged the potential of the area, and is dedicated to the continued investment into Leeds.

Working alongside architects IS:SR (Sheppard Robson) and main contractor ISG, SAS International was specified for a high quality fit-out, totalling 4,000m² of material. Targeting a BREEAM 'Excellent' rating, the space was fitted with an efficient cooling system, state-of-the-art LED lighting throughout, and an advanced building management system.

SAS System 720, a linear plank ceiling, and System 200 in RAL 1036 Pearl Gold were installed inside the building, which opened in November 2015.

The future of Sovereign Square looks bright, as planning permission for No.3 Sovereign Square has recently been granted, becoming an integral part of Leeds bustling business sector.

Estidama achieved at Abu Dhabi airport

The passenger segregation within Terminal 1 of the Abu Dhabi Airport was completed at the beginning of 2015, after eleven months of hard work. The project, commissioned by the UAE Government, involved the construction of a raised walkway above the terminal at approximately 10 metres. This allows access through to the arrivals immigration area, as well as to the transfer area for passengers needing to reach flight connections.

The offices and corridors within the passenger segregation terminal were fitted with SAS International's System 150, System 200 and System 330, with the



corridors requiring a specialised design solution.

SAS International worked together with architects Gharafi, main contractor Alec, and sub-contractor Alec FitOut to adhere to the framework of the

building design methodology Estidama, which means 'sustainability' in Arabic. The programme is a key aspect of the "Abu Dhabi Vision 2030" drive to build the Abu Dhabi emirate according to innovative green standards.

On the market for quality office space

Camden Stables Market in London is famous for its quirky shops, stalls, and fashion-forward people. Blending into the landscape of this London Borough is Building C, a fully inclusive workplace for like-minded creatives, pioneers and innovators. Sitting on top of the popular pan-Asian restaurant Gilgamesh, only a keen eye would identify the space as a commercial building, which is part of its appeal.

Architects Barr Gazetas worked alongside main contractor Broadland Construction on the refurbishment of Building C to change the existing interior into a dynamic, flexible co-working space fit to suit the needs of start-ups.

Aesthetically appealing and functional partitioning was needed in order to facilitate a working environment in which collaboration is encouraged, and where privacy and acoustic management are important in equal measures.



Since the clients Broadland and SJ Interiors requested horizontal glazing, SAS International was specified for the company's ability to fulfil the request. Providing a total of 464m² of material, 12.8mm acoustic laminated glass and 21 flush glazed doors were installed in the

quiet rooms of the independent companies.

Completed in November 2015, Building C is part of a creatively rich and supportive environment designed to forge new connections and unearth business potential.

Money raised for charities

Wear it, Beat it – British Heart Foundation – **£250**

Phil Smith - London Marathon – Sense - **£2,257**

Rosa Lenders - Reading Half Marathon – Diabetes UK - **£851**

Vikki Primmer - Reading Half Marathon – Cancer Research UK - **£983**

In Memory of Meg (Maybole) - Brain Cancer and Pancreatic Cancer charities - **£182**

Christmas Jumpers for Text Santa (at Apollo Park) - **£162**

Macmillan Coffee Morning - **£570**

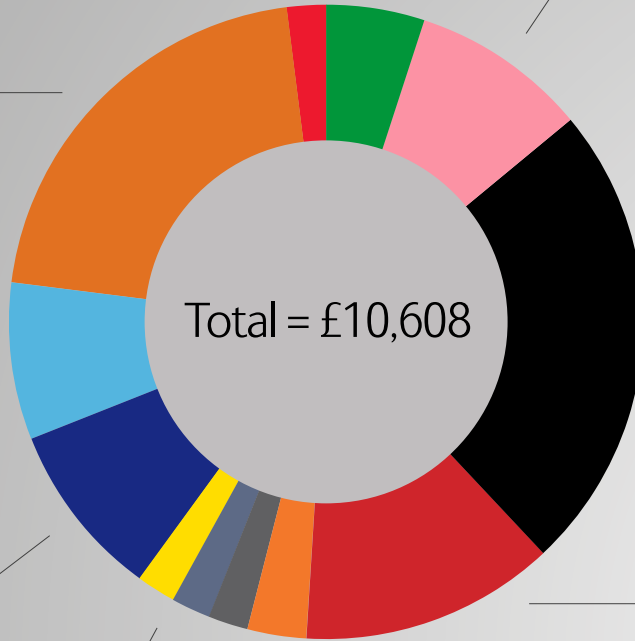
Wear it Pink for Breast Cancer Now – **£1,008**

Movember - **£2,485**

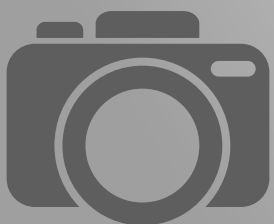
No cards for Christmas / Christmas Jumpers for Readibus- **£1,372**

Josh Hillman bike ride for Multiple Sclerosis - **£288** (\$601)

Douge Moore half marathon for Cure Leukaemia - **£200**



Three Insider magazines



Gained photography for **39** projects



R&D focus group



architects' roundtables

(for metal ceilings brochure feedback)

Product developments:



System 700



System 710



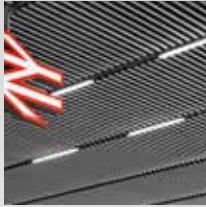
System 720



System 730



System 740



System 750



System 500



System 510

- Linear ceiling systems (700, 710, 720, 730, 740 and 750)
- System 500 Acoustic Baffles and System 510 Waveform Baffles



website launch

Top 5 pages of 2015

(other than homepage!)

- 1 www.sasint.co.uk/metal-ceilings/
- 2 www.sasint.co.uk/metal-ceilings/suspended-system-150/
- 3 www.sasint.co.uk/metal-ceilings/suspended-system-330/
- 4 www.sasint.co.uk/metal-ceilings/suspended-system-130/
- 5 www.sasint.co.uk/downloads/cad-files/trims-and-perimeters/

Website stats:

Registrations:

5,492

Sessions:

133,649

CAD Downloads:

6,971

Literature Downloads:

7,976

6,232

sessions on March 27th –
when new website went live



Twitter stats

Tweets:

538

Retweets:

243

Mentions:

197

Total followers:

12,466



LinkedIn stats

Followers:

1,615

Employees:

223



Email comms:

12

SAS Connect
internal emails

26

email campaigns
sent to customers



Presented:

31

to architects and engineers
globally (UK + Australia)

Delegates:

293

+1 new office in Hong Kong.

System 700



System 700 is intended for projects requiring an aesthetic finish where tight budget control is a major factor. The system is ideally suited to expansive retail environments and other, similar high traffic areas requiring smoke extraction applications.

A highly-cost effective steel linear profile option, System 700 comprises a steel rolled profile which simply clips into the carrier.

System Highlights:

- Steel profiles
- Service integration is limited to services separately mounted
- Limited void access (as standard)
- No end caps
- Suitable for internal applications

System 710



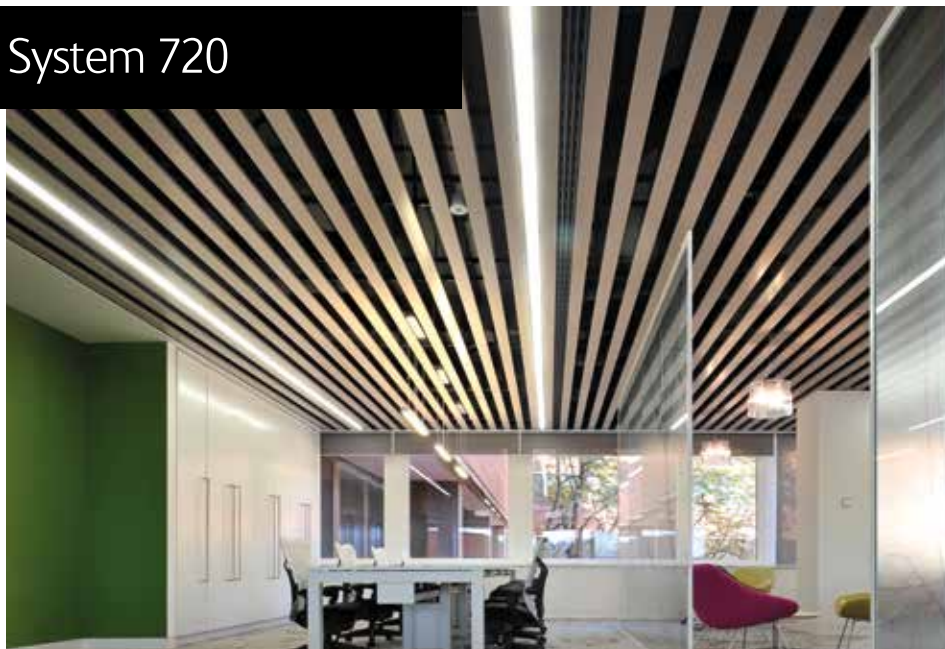
System 710 is a discontinuous linear profile system intended for use in corridors and shorter run applications between ceiling features. Similar to System 700, 710 is ideally suited to high traffic zones requiring open areas for smoke extraction.

A highly-cost effective steel linear profile option, System 710 comprises a steel rolled profile which simply hooks onto the carrier.

System Highlights:

- Steel profiles
- Pre-punched suspension system (black)
- Service integration is limited to services separately mounted
- Void access achieved through demounting profiles
- No end caps
- Suitable for internal and external applications (with clips)

System 720



System 720 is a mid-range linear 'plank' system, available in a variety of widths and depths depending on aesthetic preference. Highly robust and sturdy, System 720 is suitable for service integration as an integral design feature, offering significant creative flexibility.

System 720 comprises steel rolled c-profiles which hook over the carrier. Costs can be controlled through wider profile spacing if required.

System Highlights:

- Steel 'plank' profiles
- Waveforms achieved through bespoke carrier (non-standard)
- Full, integral integration with lights and other services
- Void access achieved through demounting profiles
- End caps
- Suitable for internal and external applications

System 730



System 730 is a linear profile system offering 'H' and 'U' formed profiles for an alternative aesthetic finish. The system is ideally suited to premium retail environments and other, similar high traffic areas requiring smoke extraction applications.

As an aluminium-extruded profile system, 730 offers superior quality, bespoke finishes and can accommodate complex geometry.

System Highlights:

- Aluminium extruded profiles
- Service integration is limited to services separately mounted
- Void access can be achieved through 600mm² and 1000mm² access panels (non-standard)
- Waveform ceilings an option through bespoke carrier (non-standard)
- Suitable for internal applications
- Anodised, polished and other specialist finishes available (non-standard)

System 740



System 740 is the most creatively versatile of SAS' linear ceilings, able to accommodate complex geometry, extrusions and void access. Unlike other continuous linear profile systems, 740 can intersperse with Class A acoustic infill panels.

The aluminium system is suitable for interiors requiring a premium aesthetic alternative to suspended tile or open cell ceilings.

System Highlights:

- Aluminium extruded profiles
- Huge scope for variety of profile shapes
- Full services and lighting integration
- Void access can be achieved through simply demounting profiles and tiles.
- Waveform ceilings an option through bespoke carrier (non-standard)
- Suitable for internal and external applications
- Anodised, polished and other specialist finishes available (non-standard)

System 750 Tubeline



System 750 fosters dynamic and impactful design along with practical considerations such as access and service integration. Tubeline offers specifiers numerous design features, such as curves and waveforms, as well as horizontal, vertical, interior and exterior mounting.

Available as either aluminium extrusions or rolled steel tubular sections, Tubeline also offers full lighting integration and visually discrete access.

System highlights:

- Aluminium extruded profiles or steel rolled sections
- Tubular profiles – 25mm and 50mm diameters (as standard)
- Full services and lighting integration
- Void access can be achieved through demountable profiles or integrated access hatch
- Waveform option (non-standard)
- Suitable for internal applications (aluminium profiles also suitable for externally)
- Anodised, polished and other specialist finishes available (aluminium only, non-standard)

Transforming Birmingham New Street Station into a gateway for travellers and shoppers alike



Birmingham New Street Station

Birmingham New Street

Birmingham New Street is the busiest station outside of London, originally built to accommodate 650 trains and 60,000 passengers per day. By 2010 it catered for 1,350 trains and over 140,000 commuters, operating at more than twice its original capacity. Since the completion of the first half of the refurbishment project in 2013, the station now accommodates a yearly 8.3% rise in passenger numbers.

SAS International commenced work on the three-phase project in June 2012. NG Bailey and main contractor Mace installed SAS systems across the platforms, the

shopping centre and the concourse.

Full scale, physical mock-ups of the bespoke ceiling solutions were built onsite to ensure design intent prior to installation. The integration of fans for smoke extraction and complex wind loads had to be considered to guarantee passenger safety. The wind loads were a concern as trains passing platforms at speed can cause considerable negative loads.

Bespoke ceilings comprising fixed angle bulkheads were installed in line with the curving platforms. The typically trapezoidal bulkheads were bolted end to end in order to form a faceted layout to follow these curves.

Using shared data from the project's BIM model, SAS International used a point cloud to measure the platforms and 3D model the panels. The model's geometry revealed that the platforms were all non-uniform. This posed a significant design challenge. The data required careful analysis in order to achieve a smooth curved line within the platform edge. This was essential to provide train drivers with an unobstructed view when arriving into and departing from the station.

The SAS International design team was able to rationalise the number of unique panel types down to four. This overcame the driver visibility issue, ensured



uncompromised aesthetics and brought costs within budget. Electronic Total Station setting-out techniques were used to set out the panels along the curve.

Special attention was required in the third and last phase of the refurbishment, when 1800mm diameter aluminium discs were supplied for the main concourse. SAS International's Design Director Richard White explains: "The discs being installed in a semi external environment was a first for SAS International, as previously, they were only installed internally. Therefore, we had to factor the wind load in when designing the discs to guarantee stability and passenger safety."



Grand Central, Birmingham

Grand Central

The Birmingham New Street refurbishment completely redesigned the Pallasades shopping centre situated above the station.

The stainless steel façade encasing the whole building offers a striking focal point in the heart of the city. Now a prominent addition to the Birmingham skyline, it literally mirrors the architecture, new and old, of the surrounding buildings.

Inside, the stunning new roof floods natural light into the shopping centre, anchored by the John Lewis department store, one of the largest outside of London. The new John Lewis design concept saw the in-house architects JLP specify System 750 Tubeline for the first time, as well as System 150 in a colour never used by JLP before (RAL 9003). Thanks to the long established and successful relationship with SAS International, JLP were happy to explore different options for their 25,000 sq ft retail project.

In total the project saw over 7,000m² of SAS International fit-out material installed. Working

alongside main contractor ISG, SAS Special Projects designed, supplied and installed several bespoke metal ceilings specified for the lower retail area within the mall:

- A mall link feature installed below glass reinforced gypsum features in the mall's access areas.
- A lozenge shaped, metal can ceiling with integrated lighting.
- A slatted System 700 linear ceiling.

The aim was to create an ideal meeting place which would serve as a gateway to Birmingham. SAS acoustic panels replaced plasterboard to manage reverberation times where acoustics were an issue. Effectively controlling unwanted noise allows for greater speech intelligibility in typically noisy environments. The management of unwanted noise has made the experience of visiting the station a far more pleasurable one.

A massive 50 million people are expected through the door each year.



John Lewis, Birmingham

50 Martin Place
receives Green Star
rating for
contemporary
overhaul



Located in one of Sydney's most significant financial districts, 50 Martin Place has a strong and proud place in the financial history of Australia. Designed in a Beaux-Arts revivalist style by Ross and Rowe and completed in 1928, it was the first large-scale all

steel-framed "skyscraper" in Australia. Occupied by the Government Savings Bank of New South Wales, the 12 storey structure was the most expensive building built in Australia at the time, containing one of the largest trading floors in the world.

With the Commonwealth Bank of Australia (CommBank) taking over in 1984, 50 Martin Place underwent its first extensive conservation and refurbishment programme. Figuratively speaking, Australians have been investing their money and their future in this building for decades.

In 2012, current owner Macquarie Group recognised the potential of 50 Martin Place as their headquarters and purchased it from CommBank, who continue their long-term lease on the ground floor banking chamber. With the transaction came the commitment to invest in the long-term preservation of the monumental building.

Architects Johnson Pilton Walker (JPW) were responsible for infusing the financial icon with contemporary additions, getting rid of the tired and dated 1980s interior masking the original fabric. A postmodern pavilion had been introduced on the roof, lending the building a peculiar scale when viewed from the surrounding city towers. Its most notable element was the central atrium, which originally fed light from roof to ground floor, but was later blocked with the creation of a plant room on level one.

JPW proposed completing the original masonry composition with the introduction of a delicate, transparent dome, shifting the perceptions of banks from 'fortress-like' to 'see-through'. The inspiration for the dome was drawn from Grand Palais in Paris and the Reichstag building in Berlin, introducing high levels (55% increase) of daylight.

In an effort to unify the common facilities in one single move, the dome on top of the building was made into a semi-public place, accommodating client floors, training and event spaces, an informal auditorium and meeting place, and a workplace below. The generous floor plates, atrium and the structural grid proved ideal for accommodating a contemporary and flexible space, housing 2,000 people.

The high sustainability rating (6 Star Green Star rating achieved) was due to highly efficient building services, underfloor displacement, an onsite treatment facility to capture and process storm water, convection extraction, and passive chilled beams. SAS International's gold anodised System 750 Tubeline (50mm) was installed below to allow for airflow. In addition System 130 was also installed throughout the offices.

The historic landmark required a certain aesthetic, which was met by SAS International's metal ceiling systems, including special panels which were manufactured to create individual ceiling bays throughout the office space.

Completed in late 2014, 50 Martin Place emerged as a reinvigorated building with a widened central atrium, circular all-glass lifts which were integrated into the elegant heritage marble façades, and a new steel-frame glass-domed roof 'crown', filtering natural light through to all levels.

The makeover of 50 Martin Place is part of a general overhaul of the area, which also included the redevelopment of 5 Martin Place aka Money Box (issue 27). Earmarked as the new "piazza" in Sydney, workers from law firms, stockbrokers, bankers and the media can mix and mingle while enjoying an array of new restaurants and outdoor cafés.

In 2015, 50 Martin Place won the Harry Seidler Award for Commercial Architecture at the National Architectures Awards.





Birmingham New Street Station, Birmingham – System 510 Waveform Baffles



Grand Central, Birmingham – Bespoke Ceilings



John Lewis, Birmingham – System 750 Tubeline



1 London Wall, London – System 330



Jaguar Land Rover, Manchester – System 150 and Doors



Cannon Place, London – System 330

Let's meet - virtually anywhere

SAS International is in the process of purchasing four Microsoft Surface Hubs for its main sites in Reading, Bridgend, Apollo Park and Maybole.

The interactive whiteboards allow the use of OneNote to share ideas on an infinite canvas, paste and annotate content from other apps, and bring remote participants into the brainstorm. This will not only save costs and time on travel between sites, but also advance the way people work together naturally. The technology is non-intrusive and brainstorming is encouraged by sharing ideas on the whiteboard.

Microsoft Surface Hubs make meetings engaging and productive by reimagining the experience. Skype for Business meetings can take place with a single tap, offering a quality audio and visual experience. Instead of fussing with cables, the time is spent connecting to people rather than technology.

The ability to open files from your computer, send meeting notes and effortlessly share content from laptops, tablets, or phones, makes communication easy. The shared content is visible to everybody in the meeting, hence, contributions can be made equally, regardless where the participant is located.

Key features

Windows 10

A new experience for Windows 10 that is tailored for group use, with ink and touch at its core. Many applications can be used without authentication.

Ink

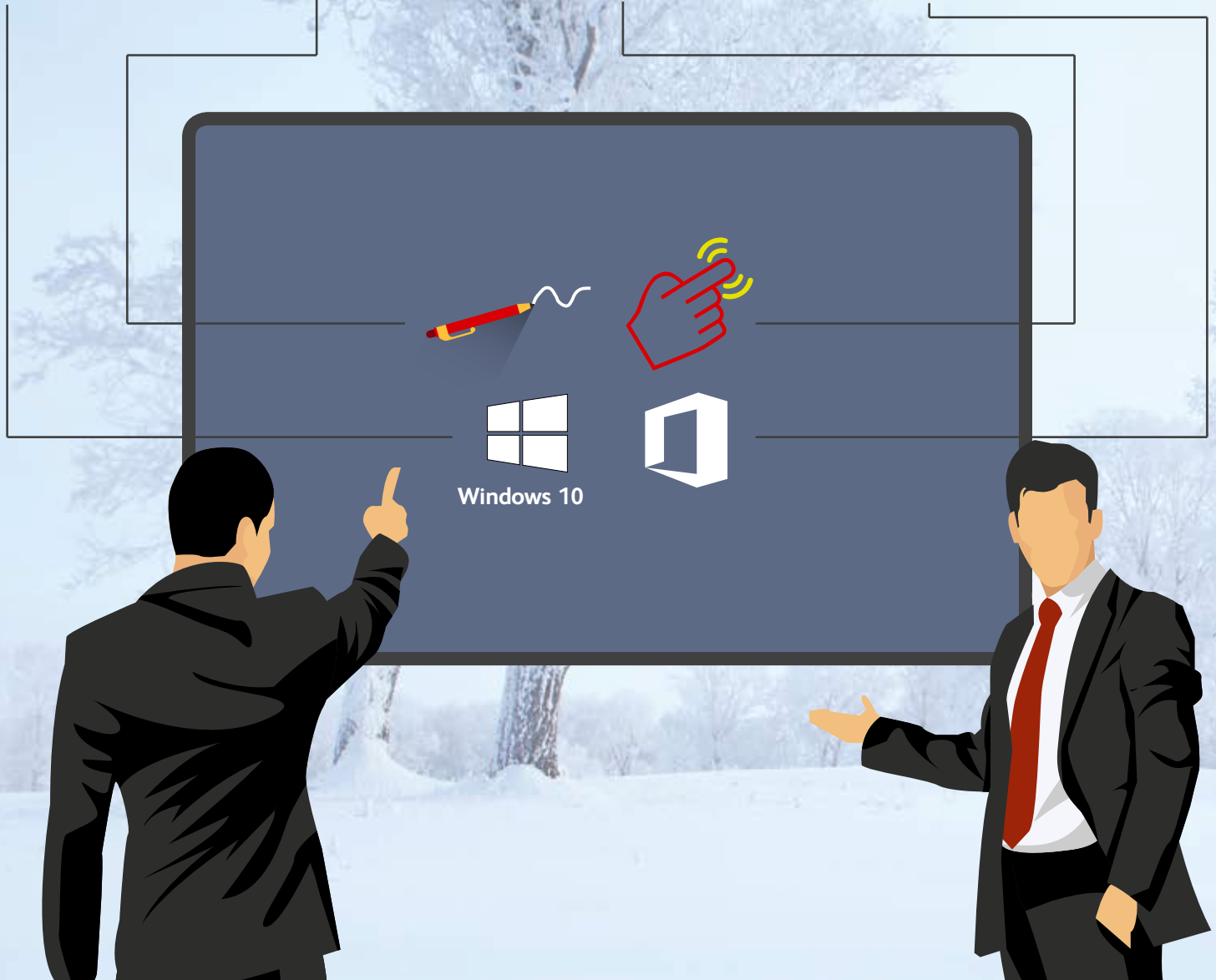
A responsive and natural inking experience that feels as fluid as a pen on paper.

Touch

Advanced touch capabilities recognise up to 100 touch points with precision, allowing multiple people to interact with the screen simultaneously.

Ships with Office

Microsoft Surface Hub comes with Microsoft Office apps like Word, Excel and PowerPoint, plus the OneNote whiteboard and Skype for Business.





Names: **Connor Ward & David Foxall**
 Job role: **Manufacturing Apprenticeship**
 Departments: **Various, including Production Engineering**
 Location: **Apollo Park, Oldbury**
 Studying at: **James Watt Campus (part of Birmingham Met)**
 Start date: **September 2015**



Who are you working with?
 DF: Like Connor, I work with other apprentices and Graham Rowley, our course tutor at college. At Apollo Park, I am working with Mahendra Patel from the Production Engineering department.

What have you achieved since starting your apprenticeship?
 CW: I have learned to design and solder electric circuits, and to carry out CAD (Computer Aided Design) design using AutoCAD software. I am also learning about the mechanical principles and application as part of the Business and Technology Education Council (BTEC) qualification.

At SAS Apollo Park, I have been through the process flow of door manufacturing and can now help to assemble Flush Glazed Doors (FGD). I understand the process for creating a Bill of Materials (BOM) for manufacturing fire doors, and have been trained in Health & Safety for the engineering workplace.

What are you working on next?

CW: At college, we will carry out workshop practice, learning to operate milling machine, including lathes, welding, metal work, and bench work.

DF: Upon completion of my full time college course, I will be at SAS working on DNC linking all the CNC machinery in the door shop, and work with production engineers on streamlining door production with Single Piece part flow project, using a RFI System (Radio Frequency Identification).

Anything else you want to include?

CW: I recommend the apprenticeship for anyone who wants 'hands on' experience in regards to setting and operating all factory machinery. It is beneficial to learn and develop skills in using AutoCAD Inventor (3D design system) and electrical/mechanical maintenance of all machinery.

DF: I agree with Connor's advice, apprentices should develop skills in using AutoCAD Inventor and get practical experience in electrical/mechanical maintenance of all machinery.



Name: **Joseph Powell**
 Job role: **IT Apprentice**
 Location: **Reading**
 Start date: **September 2015**

What area are you working in?
 I am working within the IT Department.

Who are you working with?
 I am working with James Greene and the other IT Team members (see page 30-31).

What have you learned / achieved since starting the apprenticeship?

Since joining SAS in September 2015, I have already hit the ground running by offering a high level of support

expertise to users within the Reading office. I am the primary point of contact for fault calls.

What is coming up / what are you working on next?

I look forward to developing my skills in different areas of IT over the coming year in conjunction with Basingstoke IT and my IT Apprenticeship course. SAS International has been very accommodating, letting me decide where I would like to take my career within IT.

Anything else you/they want to include?

The Apprentice scheme has given me an opportunity to develop my talents and become part of the IT Department. I look forward to achieving my ambitions and really enjoy working with the team.



Name: **Callum Muncie**
 Job role: **Engineer**
 Location: **Maybole**
 Start date: **September 2014**

What area are you working in?
 I am currently working in the Planning Department.

Who are you working with?
 Currently, I am working with Gary McNeil and June Minnis.

What have you learned / achieved since starting the apprenticeship?
 Since starting my apprenticeship, I have achieved a pass for my first year at college. I have been trained on

Radan (CAD CAM software for sheet metal cutting) at the factory, and Syteline in the office. Furthermore, I received training on the CNC machines on the factory floor. All in all, I feel that I am progressing well.

What is coming up / what are you working on next?

I started my training on the brake presses before I was moved to the Planning department, but had the opportunity to return to my brake press training once I completed my time in planning. At the beginning of 2016 I moved to the paint department.

Anything else you/they want to include?

I thoroughly enjoy developing my skills and working with SAS International.

Mo-money for Movember - £2,485 raised



Since 2003, millions have joined the Movember Foundation, a health movement to raise money for funding projects focusing on prostate and testicular cancer, as well as poor mental health and physical inactivity. Over the years, £402 million were raised and 1,000 projects financed. This year, SAS International joined the movement and embraced some facial handlebars.

In support of Movember, SAS International's men (Mo bros) and women (Mo sistas) embraced the moustache for a month, no shaving allowed! Some of the women, limited in their moustache growing abilities, signed up for the MOVE Challenge for which physical activity is increased and tracked to promote a healthier lifestyle.

Rik Lenney pledged to shave off his mouth brow, a facial fixture since his teenage years, once the £1,000 mark has been hit. Having raised £916 himself, Rik bravely said goodbye to his whiskers in the name of charity.

SAS International would like to thank everyone for taking part and donating. It was a mo-tastic month and in total £2,485 was raised!

Going in the opposite direction, Construction Director

The Fast & The Furious

In September 2015, 15-year old Jack McCarthy, son of Warren McCarthy, Managing Director of Integra Contracts, took his first Super 1 karting championship title home at the world-renowned PFI circuit near Grantham in Lincolnshire.

Aged 8, Jack started to be a regular at the race track, eventually persuading his father to buy him his own kart. These days, he competes in the Junior Rotax Max category, using 125cc water-cooled Rotax engines, with speeds reaching a maximum of 70mph.

Although he only started to compete last year, Jack has already won the Dubai Open Championship, followed by the runner-up spot at the Rotax Winter Cup, held in Campillos, Spain. He also emerged victorious at the Euro Max championship at Genk in Belgium.

Jack has big plans for the future: "My next step will be to move up to senior racing next season, followed by the MSA Formula the year after. Ultimately, I'd love to be in Formula One or the World Endurance Championship."

SAS International wishes him all the best.



We have a king in our midst

SAS International's System Engineer Shaun Keddy has been harbouring a secret for many years – he plays the ukulele, in a club called Maesteg where ukulele enthusiasts get together to play and learn new skills.

On the 26th of September 2015, Shaun and two other members of Maesteg performed at the Elvis Festival on the Welsh seaside town of Porthcawl, the biggest festival of its kind. Before the gig, the trio appeared on The Owen Money show on BBC Radio Wales.

The feature events of the festival take place in Porthcawl Grand Pavilion, but festival goers can visit over 100 shows in and around town.

After their official performance, Shaun Keddy and his band also performed various Elvis songs in the streets to celebrate the music legend and to entertain the crowds. Long live the King!



Cake for a good cause - SAS International hosts MacMillan Coffee morning

SAS International took part in the World's Biggest Coffee Morning – Macmillan's main fundraising event in aid of people facing cancer. Now in its 25th year, the coffee morning has previously raised as much as £25 million.

Bridgend hosted their second Great SAS Bake-off, with impressive cake creations on display. Judged by SAS International's Manufacturing Director Mark McElhinney, it was amazing baker/Senior Export Sales Coordinator Karine Pope who took the cake.

Thank you to everybody at Reading and Bridgend for baking delicious homemade cakes, and to those who bought and ate them. The donations accumulated to £570 in total.



From Sydney to Wollongong - cycling for charity



Enduring 90km of gruelling road, Josh Hillman, National Technical Sales Manager at SAS International Australia, cycled all the way from Sydney to Wollongong in the name of charity.

Raising \$601 for MS Gong Ride, a charity supporting people with Multiple Sclerosis, Josh made his way down the East Coast of Australia. But it was not all sweat and tears as he was riding along the Tasman Sea; enjoying the stunning view from the top of Otford Point, it sure was worth it.

Run Douge, run!



Douge Moore, CNC operator in the Door Shop at Apollo Park completed the Great Birmingham Half Marathon in October 2015, finishing in 2 hours and 24 minutes.

To add to this great achievement, he raised over £500 for Cure Leukaemia, a charity which allows patients with blood cancer access to remarkably effective new treatments.

Since 2013, a combined number of 1,000 runners took part in the Great Birmingham Run on behalf of Cure Leukaemia, raising over £250,000. This money has been used to fund more specialist research nurses in Birmingham and ultimately help towards the aim of finding a cure for blood cancer in the next 30 years.

Douge would like to thank his colleagues at Apollo Park who contributed nearly £200 towards the donations raised.

Who wore it best?

October is Breast Cancer Awareness Month, a worldwide annual campaign involving thousands of organisations to highlight the importance of awareness, education and research into the disease. Breast Cancer Now is the UK's largest breast cancer charity dedicated to funding research into the disease.

Through campaigning, collecting and an array of events such as the Pink Landmarks, Pink Ribbon Ball and Wear it Pink, the charity tirelessly works on getting as many people as possible involved.

On the 23rd of October 2015, the style-stakes at SAS International were high, as we participated in the 'wear it pink' day by baking (pink) cakes, playing games and, of course, wearing it pink.

A total of £1,000 was raised for Breast Cancer Now. A big thank you to all staff taking part at Reading, Apollo Park and Bridgend.



A big thank you to our Long Service Awards winners.
And a big welcome to our new starters.

25 years' service



David Maiden Bridgend
Starting Role: Press Fabrication Operator
Current Role: Padshop Line leader

15 years' service



Paul Day Reading
Starting Role: Logistics Manager
Current Role: Group Logistics Manager

10 years' service

Garry Grindrod Maybole
Starting Role: Brake-Press Operative
Current Role: Brake-Press Operative

David Jess Maybole
Starting Role: Paint-line Operative
Current Role: Brake-Press Operative

David Kerr Maybole
Starting Role: Paint-line Operative
Current Role: CNC Operative

Lee Booton Apollo Park
Starting Role: Machine Operator
Current Role: Machine Operator

Scott Reader Apollo Park
Starting Role: General Operative
Current Role: Logistics Supervisor

Leighton Green Apollo Park
Starting Role: Assistant Accountant
Current Role: Assistant Accountant

Craig Robinson Maybole
Starting Role: Engineering Apprentice
Current Role: Production Engineer

Alius Bieliauskas Bridgend
Starting Role: Wemo Operator
Current Role: Soenen Operator

Sean O'Connor Bridgend
Starting Role: Operator
Current Role: Quality Inspector

Krzysztof Zygmunt Bridgend
Starting Role: Assembly Operator
Current Role: Assembly Operator

Rhys Jones Bridgend
Starting Role: Planning Engineer
Current Role: Group Planning Logistics Manager

Lilianna Godzinska Bridgend
Starting Role: Assembly Operator
Current Role: Assembly Operator

David Sinclair Maybole
Starting Role: Production Engineer
Current Role: Production Engineer

5 years' service

Bob Poole Reading
Starting Role: Estimator
Current Role: Third Party Distribution Account Manager

Alireza Bahrami Apollo Park
Starting Role: General Operative
Current Role: General Operative

David John Collins Bridgend
Starting Role: Production Planning Engineer
Current Role: Planning Engineer

Neil Marshall Burgess Hill
Starting Role: Glass Surveyor
Current Role: Glass Surveyor

Gary Buxton Apollo Park
Starting Role: General Operative
Current Role: General Operative

Michaela Bradley Leeds
Starting Role: Branch Administrator
Current Role: Senior Sales Coordinator

Tony Payne Burgess Hill
Starting Role: Glass Fitter
Current Role: Glass Fitter

New Faces

APOLLO PARK
Donna Woolley Procurement & Logistics Manager

David Foxall Manufacturing Apprentice

Conor Ward Apprentice Engineer

Keith Ball Quality Engineer

Dan Morgan Access Panel Market Manager

BRIDGEND
Owen Gallagher Quality Manager

MAYBOLE
Janice Jackson Planning Administrator
Scott McClure Payroll Purchase Ledger Admin
Conner McGill Production Engineer

READING
Olivia Willmott Sales Order Processor
Slocombe Sales Order Processor
Gary McCrae NED
Joseph Powell IT Assistant
Kevin Brown Senior Designer

Chipo Musvaburi Designer
Brian Hamrouche Warehouse Operative
Emily Judges Junior Sales Co-Ordinator
Teri Anderson Office Administrator
Katherine Seton Marketing Executive
Ryan Marieges Project Developer
Alan Fisher Driver

SAS DIRECT BIRMINGHAM
Darrin Sutton Glass Fitter

SAS DIRECT BURGESS HILL
Paul Johnson Driver

SAS DIRECT LEEDS
Michael Collins Sales Co-Ordinator
Sam Brayshaw Glass Fitter

20 years' service

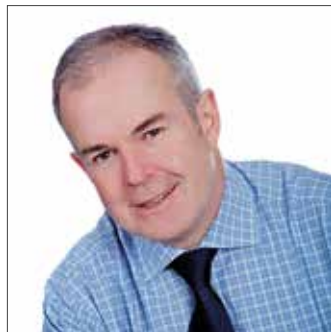


Robert Stinchcombe Bridgend
Starting Role: Wemo Operator
Current Role: Wemo Operator

Clelland Stewart Maybole
Starting Role: Welding Operative
Current Role: Welding Operative



David Tittley Apollo Park
Starting Role: Machine Operator
Current Role: BOM Engineer



Richard White Reading
Starting Role: Sales Development & Technical Support Manager
Current Role: Design Director

Ben Jones

Trainee IT Technician



What has been your biggest IT challenge?

Getting the network upgrade finished has required a lot of co-ordination between many companies, so time management has been challenging.

What future projects are you working on?

Currently halfway through upgrading the Networks and the Wi-Fi; the next big projects will be sorting out the phone systems and getting the mobile phones renewed.

What is your favourite food and drink?

Dutch style pancakes with iced tea; you haven't lived until you've had a cheese and bacon pancake.

What is your role within the team?

As well as responding to IT help tickets, I handle all of the purchasing for the IT department, look after the mobile phones, set up the majority of the hardware that people use and help Shaun look after the servers. I also help with the major projects we have going on and plan future projects.

What do you do on a typical working day?

No day is the same, but it usually involves me sorting problems that have come into IT help, checking to make sure all the servers and the networks are running as they should, dealing with any problems that people come to me with directly, then getting the hardware requests done.

Where is your favourite place for a holiday?

Holland/Belgium, there's plenty to do in the Benelux area.

What are your hobbies/what do you like to do in your spare time?

I'm known for my cycling and for my love of travel, and for trying to eat in every restaurant in Cardiff. I've made it through most of them, but more keep opening up.

James Greene

Group IT Manager



What is your role within the team?

I manage the team and run major projects within IT.

What do you do on a typical working day?

I ensure all applications and systems are running to the best of their ability, providing day to day support within the Reading office and remote support and assistance where required, while managing numerous projects within IT.

What has been your biggest IT challenge?

Identifying areas for improvement and running projects to increase the

Jonathan Rogers

Junior DBA



What has been your biggest IT challenge?

Solving the printing issues we've experienced from within SyteLine, as it can be very hard to focus when under pressure.

What future projects are you working on?

Mostly database related projects aimed to improve the user experience and aid in the daily management of the system.

What is your favourite food and drink?

Depends on the day – and if anyone else is going out. Here's a short list: Pizza, Chinese, Subway and Greggs.

What is your role within the team?

I am the first point of call for SyteLine and other database issues. When I'm not 'firefighting', I'm looking for the next issue to solve.

What do you do on a typical working day?

There isn't a typical day when working with technology. In short: I ensure everything is up and running, respond to internal and external emails and manage various ongoing issues. In between that it's educating myself on various upcoming technologies that can help with improving performance across the board.

Where is your favourite place for a holiday?

Probably anywhere cold. I love Canada in winter or the French Alps. A bit of snowboarding is good for the soul, and terrifyingly awesome when done properly!

What are your hobbies/what do you like to do in your spare time?

Too many things to count. I build and paint models, hike and do some photography. I'm even known to do some downhill mountain biking when not playing Dungeons & Dragons! Other than that – the typical Doctor Who, Games of Thrones, Star Trek etc.

Rob Stacey

Group DBA



What is your role within the team?

My main function is ensuring that the Cloudsuite system is running and accessible. I also do some development work and am currently training/mentoring Jonathan in his role as Junior DBA.

What do you do on a typical working day?

A day usually starts with some troubleshooting of any problems experienced overnight, then check that the overnight procedures (backups/indexing) have all completed successfully. Then it's onto the Helpdesk with Jonny prioritising and working through the cases in there and carrying out any development work the Business Improvement Team identify.

capability, speed and reliability of all internal IT systems. Also improving communication between the IT Department and all SAS users.

What future projects are you working on?
New Unified Communications system, state of the art new network infrastructure and IT security.

What is your favourite food and drink?
Steak and a nice glass of Rioja.

Where is your favourite place for a holiday?
California, specifically Santa Cruz

What are your hobbies/what do you like to do in your spare time?
I enjoy performing with various Oxford based bands as a vocalist and also spend an inordinate amount of time on computers working on new VR hardware and gaming. I also have an 18 month old daughter and absolutely love spending family time taking her out and about to various events around Oxford.

What has been your biggest IT challenge?

Most recently the technical and data side of the upgrade of Syteline 7 to Cloudsuite 9 but it went smoothly considering the amount of data involved. This was a testament to the prep work put in by myself and Jonathan on the technical side with Louise Evans and Sarah DeBank on the Business Improvement side.

What future projects are you working on?

Phase 2 of the Cloudsuite 9 Project (restructuring the databases).

What is your favourite food and drink?

Italian or Chinese, but anything that's tasty and bad for you. As for drink, a good bottle of Chianti or Penderyn Merlyn Liqueur.

Where is your favourite place for a holiday?

Anywhere in the countryside where it's quiet, with excellent views and walking/photography opportunities.

What are your hobbies/what do you like to do in your spare time?
Visiting ancient buildings, anything to do with Victorian detectives, listening to hippy music and reading Sci-Fi or anything in the Douglas Adams genre.

Chris Harper

Business Analyst



What is your role within the team?

I support the IT Systems in Apollo Park and our Direct branches. Recently I have become responsible for writing the Apollo Park configurator for Doors and Partitioning.

What do you do on a typical working day?

I solve IT related issues, mainly affecting Apollo Park and Direct branches. I look at issues and develop the configurator, and assist with any current IT projects.

What has been your biggest IT challenge?

Learning how to use the configurator was a major learning curve for me. Knowing that the majority

of non-stock jobs produced at Apollo Park are produced using BOMS generated by the configurator that I wrote is very satisfying. My knowledge of doors and partitioning products has come on leaps and bounds!

What future projects are you working on?

Currently I'm working on expanding the configurator to include more of our products. I'm also working closely with HR to deliver improvements within the HR computer systems. IT within SAS is always evolving to keep track of the ever changing technology available and there are always several exciting projects in the horizon.

What is your favourite food and drink?

I enjoy going out for a curry and I'd probably favour a cold glass of coke.

Where is your favourite place for a holiday?

Anywhere hot. I recently went to Turkey which I enjoyed. I'm looking to take the children to Disneyland Florida before they (and me) get too old!

What are your hobbies/what do you like to do in your spare time?

I have three children and two dogs which makes a pretty hectic home life. I'm a black-belt in Tae-Kwon-Do, so I spend a lot of my time either training or teaching others. I've also started playing football again on a Sunday morning, though my body isn't sure this is such a good ideal!

Shaun Keddy

Systems Analyst



What is your role within the team?

As Systems Analyst I make sure that all systems are operational and look at improvements or resolving issues. Also rollout projects such as Exchange 365 and the new internal network infrastructure. Along with this I deal with day to day issues as they arise.

What do you do on a typical working day?

There is no such thing as a typical day in IT. Mostly the day starts off with ensuring systems are running, checking emails and IT Help cases for issues. Throughout the day I then tackle user issues and requests. In between this I look at our projects and see what needs to be completed/prepared.

What has been your biggest IT challenge?

To date, my biggest challenge has been identifying solutions for manufacturing machinery of which I had no knowledge and was expected to find solutions. A recent challenge was moving a complete data centre structure to the Bridgend site.

What future projects are you working on?

At present I am working on the new internal network infrastructure. Further projects down the line include data storage and data security.

What is your favourite food and drink?

I like whisky mostly but can never resist a bottle of Penderyn Merlyn (a cream whisky liqueur) with a nice Indian meal or a full roast dinner.

Where is your favourite place for a holiday?

I love the outdoors so usually go camping in West Wales, Cornwall or Devon.

What are your hobbies/what do you like to do in your spare time?

In my spare time I run the Maesteg Ukulele Club and most of my time is spent practising the ukulele and preparing songs. I also enjoy walks, listening to rock music and, as a typical IT person, I watch too much Sci-Fi.



GRAND CENTRAL

MONSOON